



*SET-UP EQUIPMENT*

# SET-UP Wheels with integrated laser track

## for the following vehicles:

- Porsche 997 CUP/GT3 R - Porsche 991 CUP
- Audi R8 LMS GT3 / GT4
- Mercedes SLS AMG GT3 - Mercedes AMG GT3
- Bentley Continental GT3

Adaptionen for other vehicles by simply changing the wheel mounting.

- Material high-strength aluminium EN AW 7075, milled from solid
- Infinitely adjustable wheel tread
- Fine adjustment of the wheel diameter by shims plates
- Minutes accurate reading of the trace value by battery-powered laser line
- Surface for the camber gauge

## We guarantee:

- High quality
- Directly from the manufacturer
- 100% Made in Germany





## Flightcase

Quality flightcase with internal rollers, for the transport and storage at the workplace.

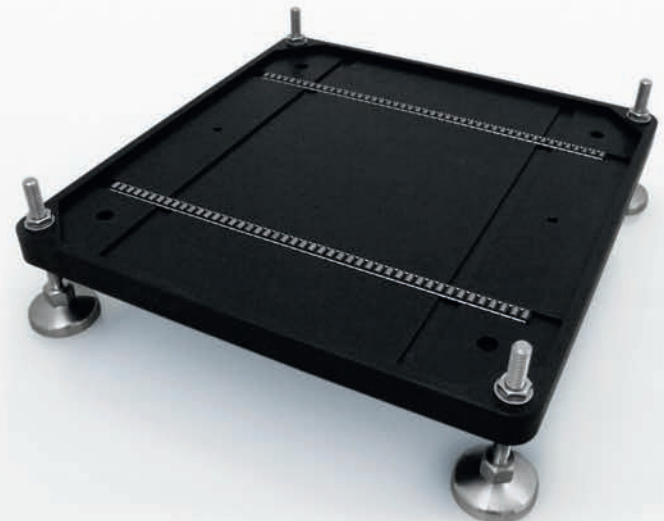
## SET-UP Boards

In addition to our SET-UP Wheels, we offer SET-UP Boards. Thus when making adjustments the wheel loads can be checked and corrected simultaneously.

The inserted cylindrical roller cage prevents when lowering the vehicle the interlocking of the load cells.

- Material aluminium EN AW 7075
- Corrosion resistant finish
- Feet stainless steel

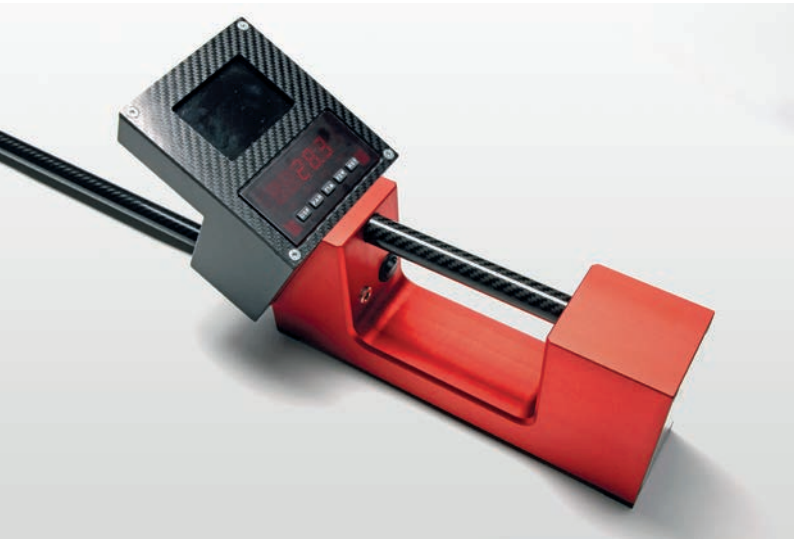
On request, we also supply the matching wheel weight trolley.



# RIDE HEIGHT LASER

High-quality measuring unit for vehicle height control. The long measuring arm and the bottom mounted plastic conductors allow easy reach for all measuring points under the vehicle. By using the built-in camera a precision positioning is possible without any difficulty. The measured value display in mm is read directly on the second display. Measuring tolerance +/- 0.5 mm.

Optionally, a test gauge with two reference measurements and a flight case are available.



## Sales & Service

### no compromise

Markus Röhrich  
Gewerbering Süd 2  
97359 Schwarzach  
Germany



Phone: +49 (0)9324 981 740 1  
Fax: +49 (0)9324 981 766  
Mobil: +49 (0)163 6 303 606  
[racing@no-compromise.net](mailto:racing@no-compromise.net)



[www.psg-racing-parts.de](http://www.psg-racing-parts.de)

## Manufacturer

### Peter Schmid GmbH

**PETER SCHMID GMBH**

CNC-Bearbeitung  
Siemensstraße 7  
74193 Schwaigern  
Germany

Phone: +49 (0)7138 812 71-0  
Fax: +49 (0)7138 812 71-28  
[info@peterschmidgmbh.de](mailto:info@peterschmidgmbh.de)  
[www.peterschmidgmbh.de](http://www.peterschmidgmbh.de)